



The Stratified Policing Model and Crime Suppression

January 15, 2025

www.wrps.on.ca



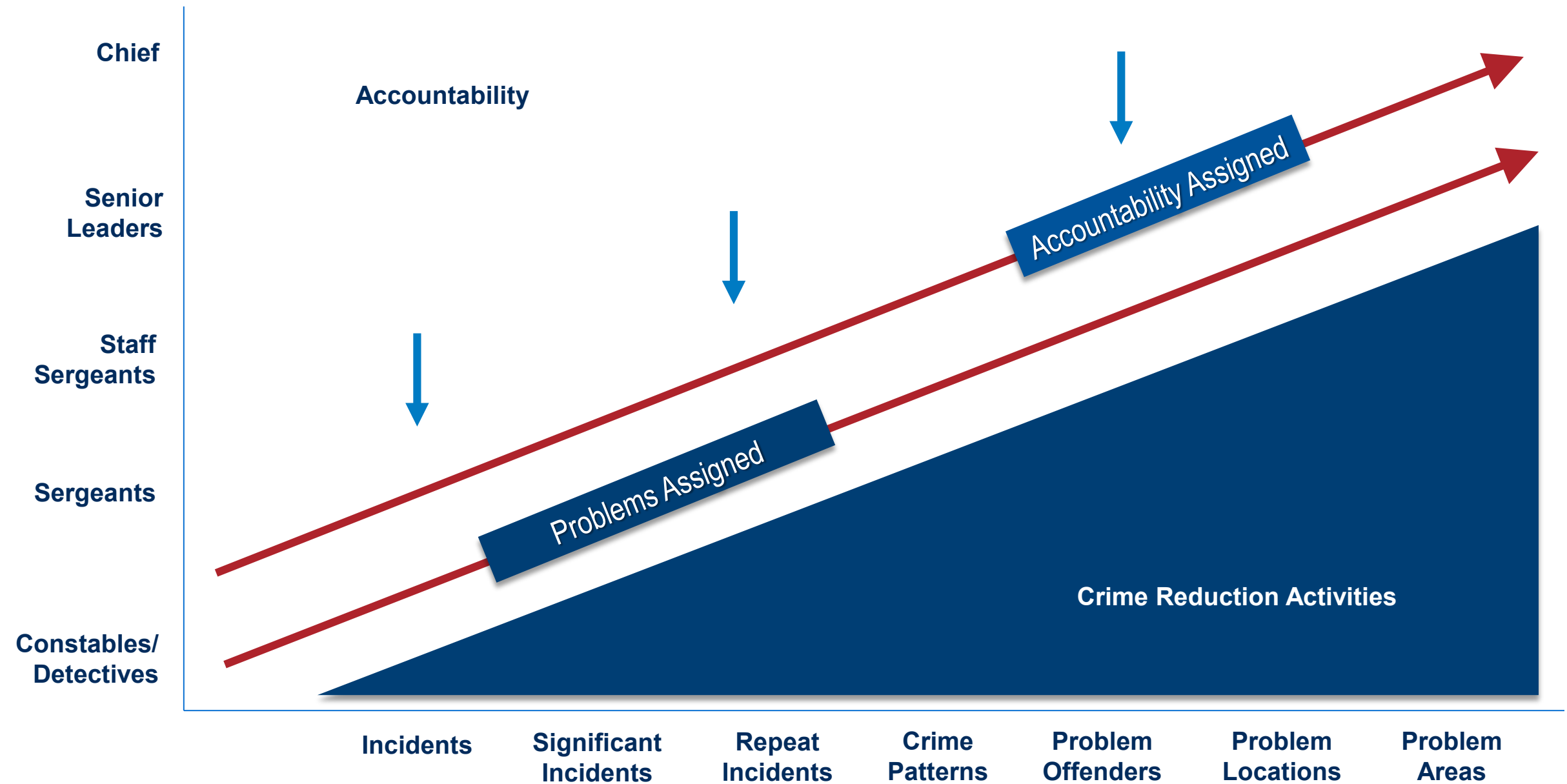


Key Initiatives

- Review completed of WRPS organizational framework including systems and procedures related to crime suppression.
- Key opportunities for enhanced outcomes in reducing crime and disorder incidents were identified including:
 1. prioritize geographic and temporal areas based on crime incidents, citizen-generated calls for service and/or community concerns;
 2. identify and investigate frequent (prolific) offenders;
 3. focus attention on the most frequent and serious crimes; and
 4. developing specific accountability mechanisms at every level and across all units.

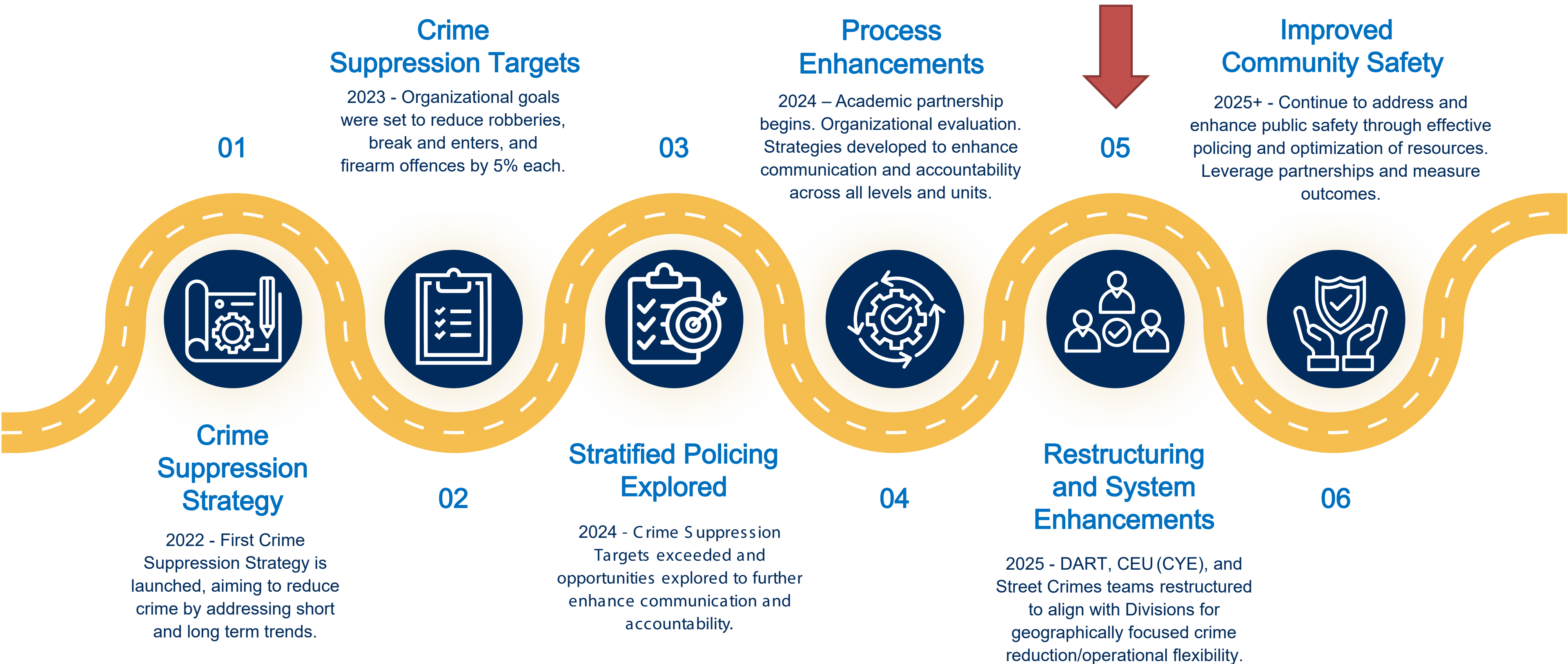
Stratified Policing Framework

- Problems (whether crime and/or disorder) are stratified from left to right (x-axis) by level of complexity, with rank or position accountable stratified up and down (y-axis).
- Systematic Problem Solving refers to evidence-based crime reduction strategies that are implemented by all ranks and across all units. As the complexity of a problem increases so does the rank of the position accountable.
- Systematic Accountability refers to the expectations set from the top of the organization and flow down. These expectations inform priorities and crime reduction work.



Source: Adapted from R. Santos and R. Santos, "Stratified Policing, An Organizational Model for Proactive Crime Reduction and Accountability", 2022

WRPS Crime Suppression Roadmap

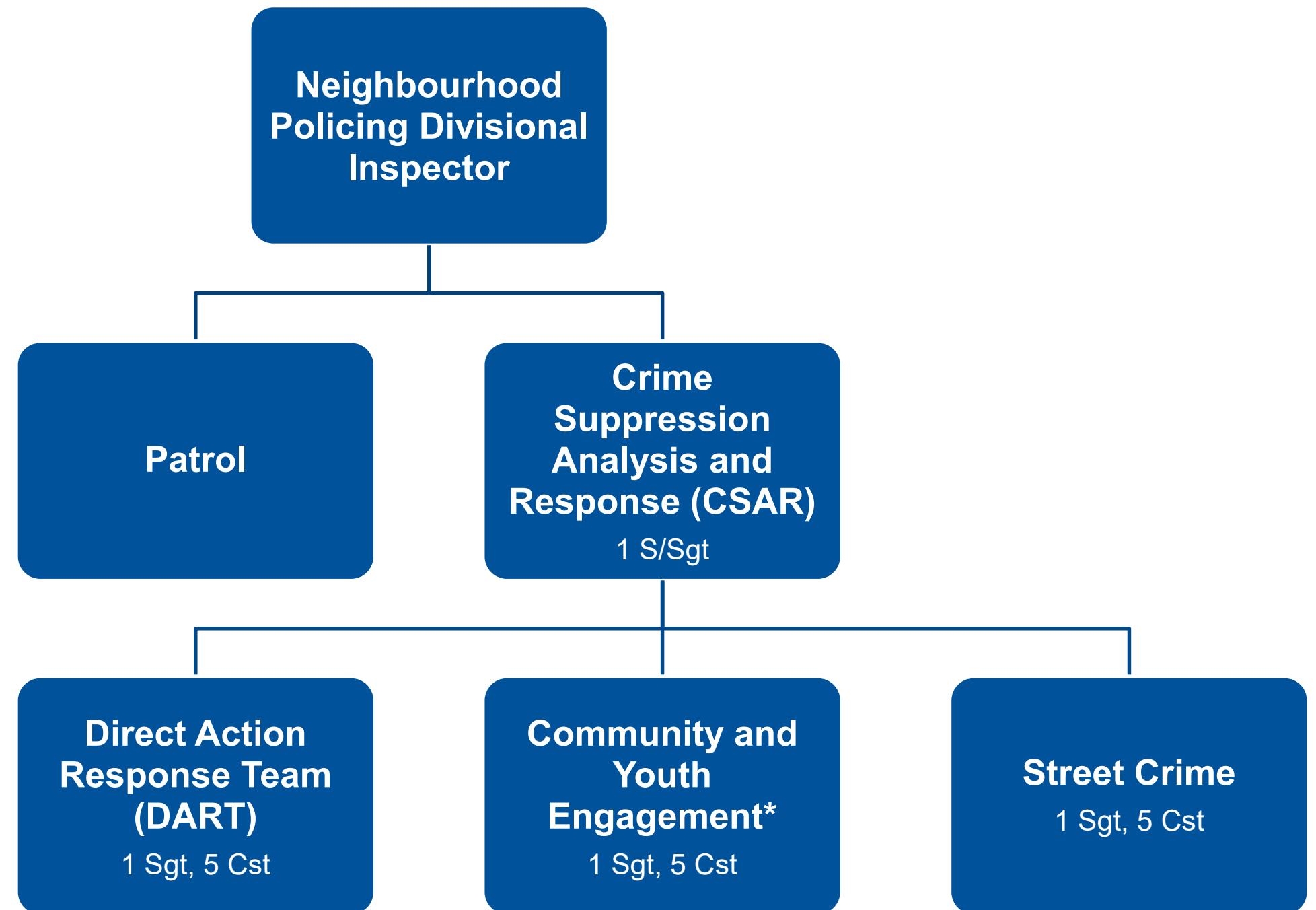




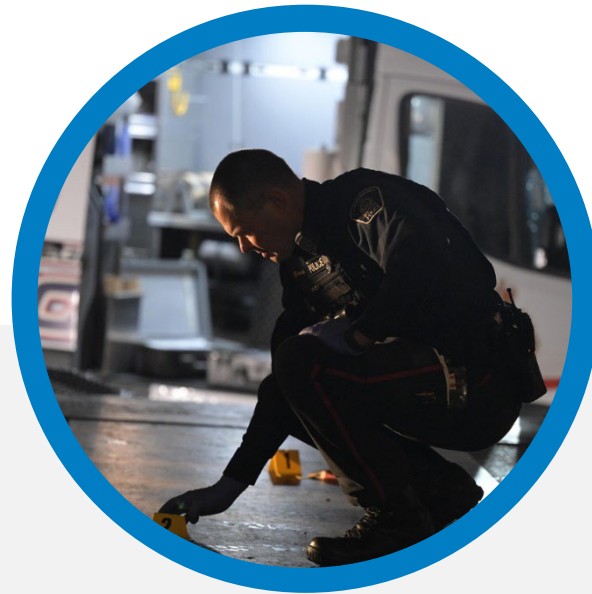
Divisional Realignment of Resources

- South Division (Cambridge)
- Central Division (Kitchener)
- North Division (Waterloo)

 Rural Patrol Sergeant
(New Position)

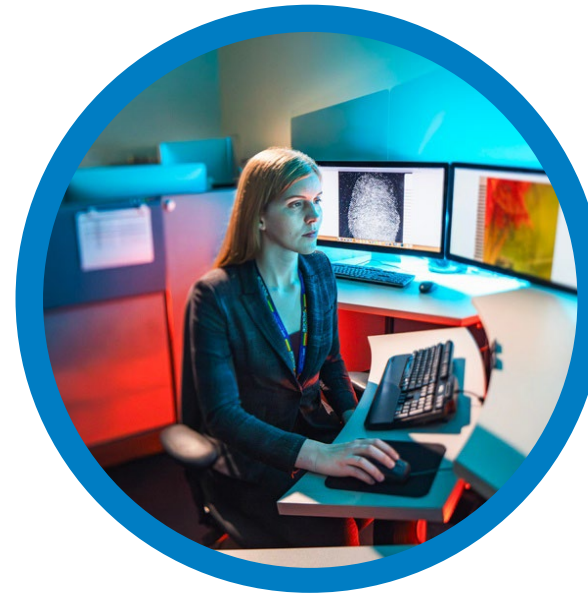


Regional Investigative Services Support



Intelligence Services

- Crime Analysis
- Drugs & Firearms
- Robbery
- Break Enter & Vehicle Theft
- Cybercrime
 - Covert Operations Support
- Criminal Intelligence
 - Gang and Hate
 - Project Team



Criminal Investigations

- Forensic Identification
- General Investigations
- Intimate Partner Violence
- Major Crime
- Special Victims



Operational Support

- Emergency Services and Public Safety
- Major Events
- Special Response
 - Emergency Response Team
 - Canine
- Traffic Services
- Frontline Support
- Communications
- Real-Time Operation Centre (RTOC)



Enhanced Communication



Prolific Offenders



Community Partnerships



Measuring & Evaluating Success

The Road Ahead

Thank You

